

The image features a background of natural stone with a complex, marbled pattern in shades of beige, tan, and light brown. A prominent, dark, curved shadow or black overlay is positioned on the left side, creating a sense of depth and highlighting the text. The text is centered horizontally and vertically, rendered in a clean, white, sans-serif font.

**REGENERATED
STONE**



3D big panel board is made of natural stone powder and modified clay. We have selected the inner (outer) projects' styles that are very popular among designers in the market, and independently developed and produced rammed earth board, concrete board, line stone board, rust board, ripple board, regenerated stone, etc. It has visual texture effects such as light weight, flexible, breathable, convenient construction, natural simplicity, etc. It can be perfectly integrated with other materials or create a unique design shape. It is suitable for place and irregular space that need to pursue individuality and artistic modeling characteristics.

ENTERPRISES
Z



Product introduction

Smart Stone Regenerated Series is fully upgraded from texture, color and pattern. The exquisite patterns and textures are original and rough, profound and thought-provoking. It has the advantages of large size, light weight, flexible and bendable, convenient installing and low cost, and can be used interior and exterior.

Dolomitic Travertine/
Claybank

Size: 600*1200mm

Thickness: 2.5-3.5mm

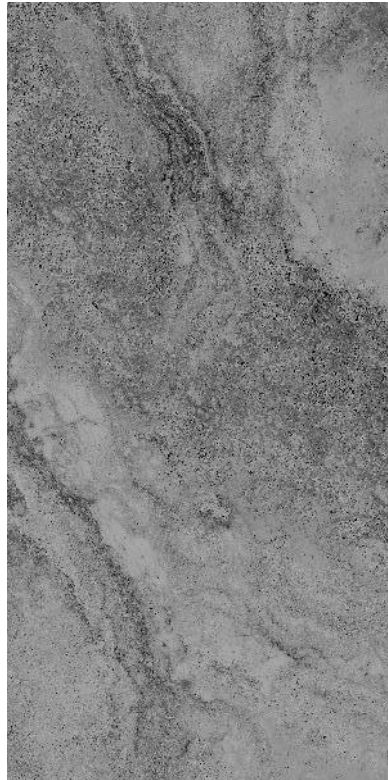
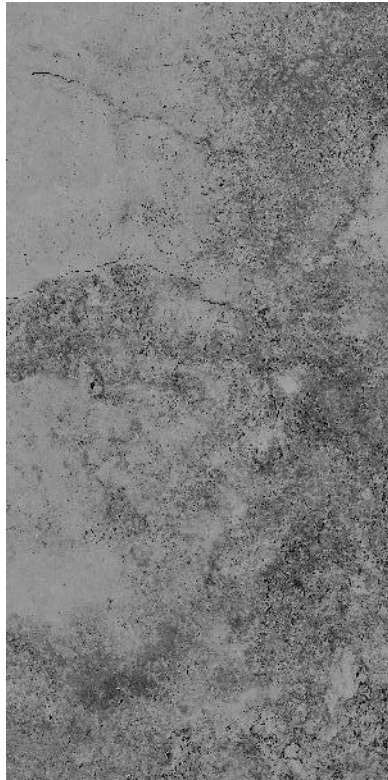
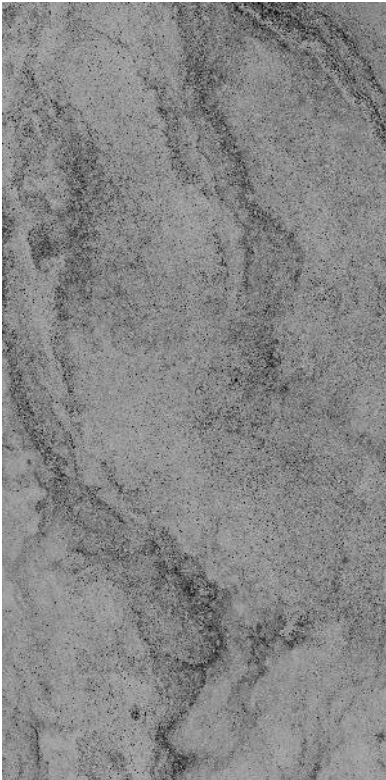
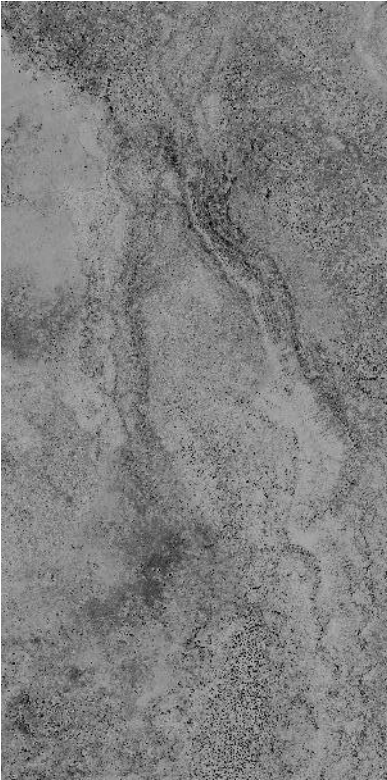


Dolomitic Travertine/Dark

Grey

Size: 600*1200mm

Thickness: 2.5-3.5mm



Dolomitic Travertine/Andean

Red

Size: 600*1200mm

Thickness: 2.5-3.5mm



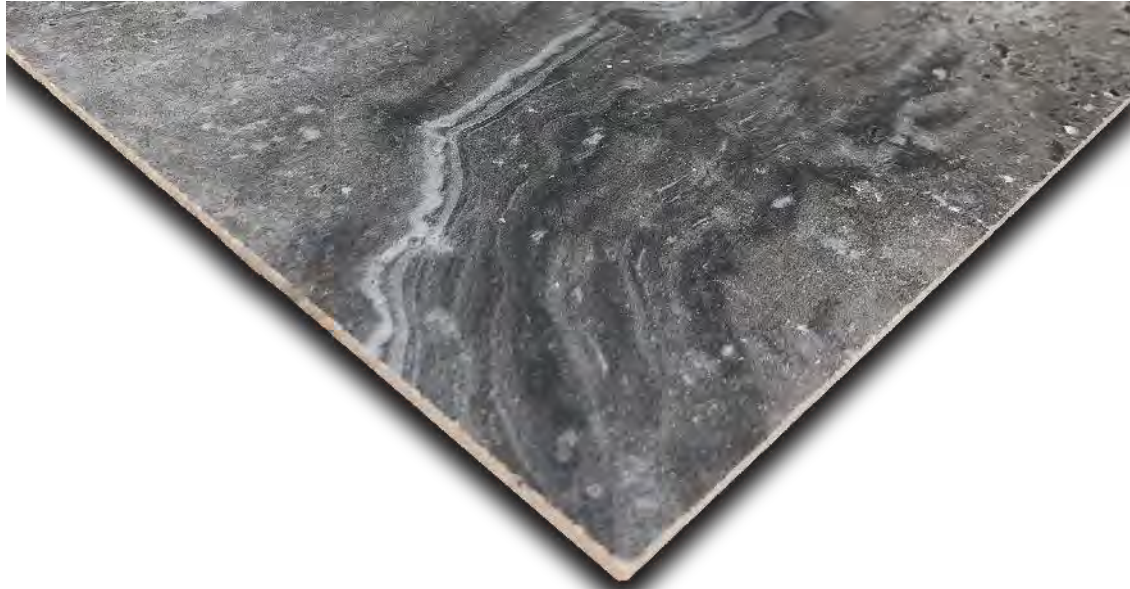
Dolomitic Travertine/Andean

White

Size: 600*1200mm

Thickness: 2.5-3.5mm

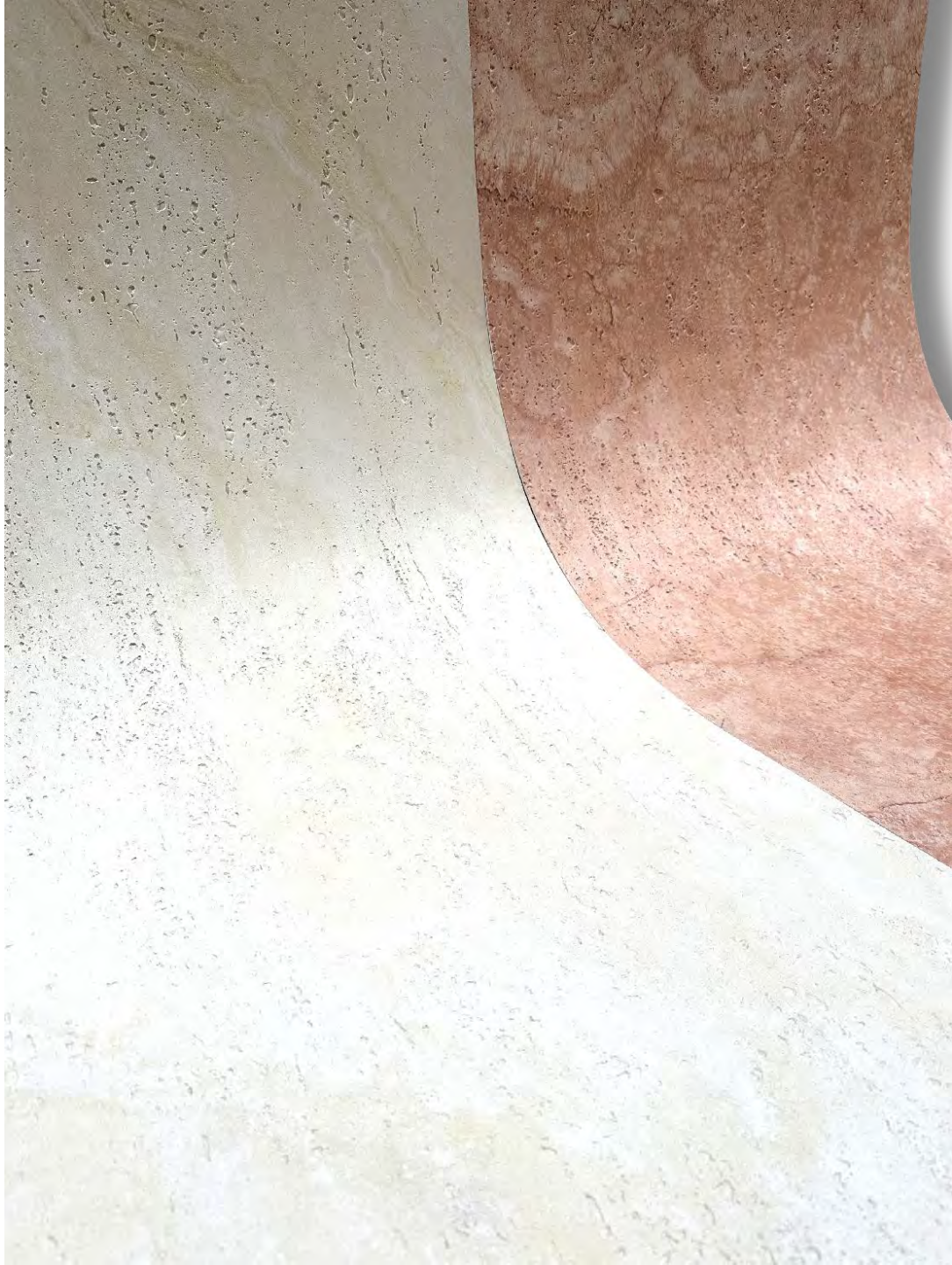




Dolomitic
Travertine



Dolomitic
Travertine







Linear Travertine/Claybank

Size: 600*1200mm

Thickness: 2.5-3.5mm



Linear Travertine/Light Grey

Size: 600*1200mm

Thickness: 2.5-3.5mm



Linear Travertine/Roman
yellow

Size: 600*1200mm

Thickness: 2.5-3.5mm









Romanite/Cloudy Yellow

Size: 600*1200mm

Thickness: 2.5-3.5mm



Romanite/Cloudy White

Size: 600*1200mm

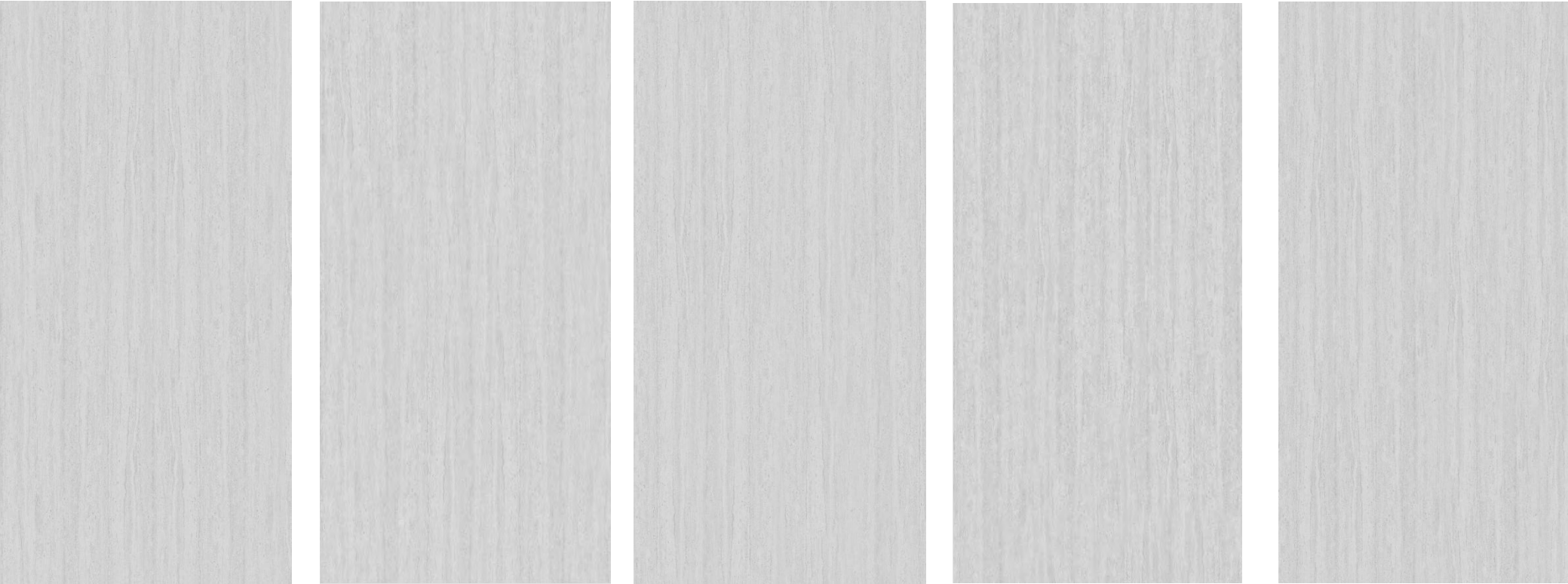
Thickness: 2.5-3.5mm



Romanite/Cloudy Grey

Size: 600*1200mm

Thickness: 2.5-3.5mm





good flexibility and light weight

Stream limestone/
Claybank

Size: 600*1200mm

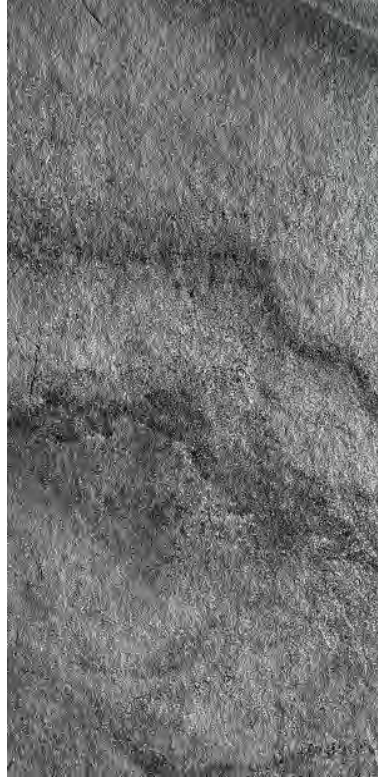
Thickness: 2.5-6mm

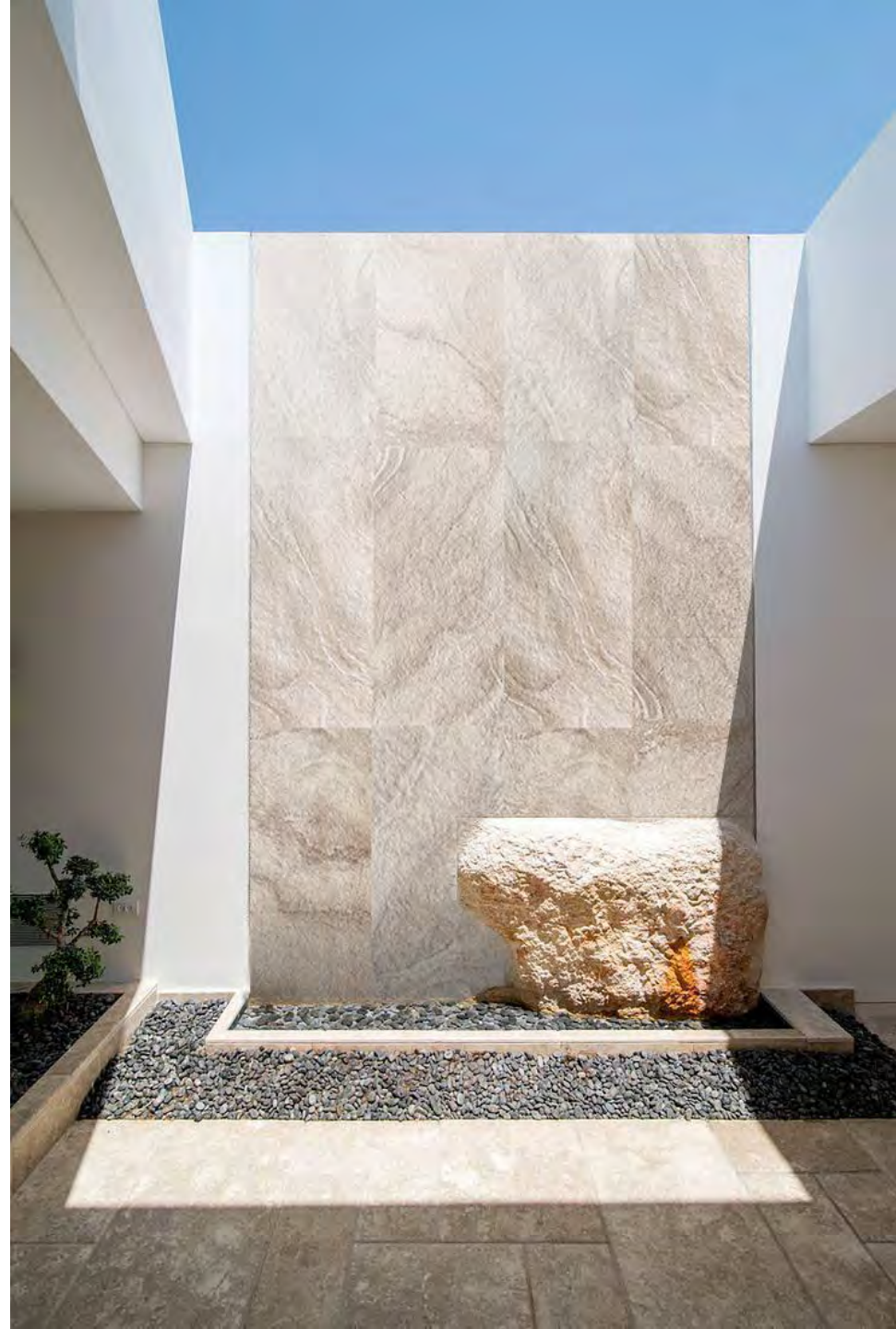


Stream limestone/Dark
Grey

Size: 600*1200mm

Thickness: 2.5-6mm





Dolomitic Marble Pillar/
Claybank

Size: 600*2780mm

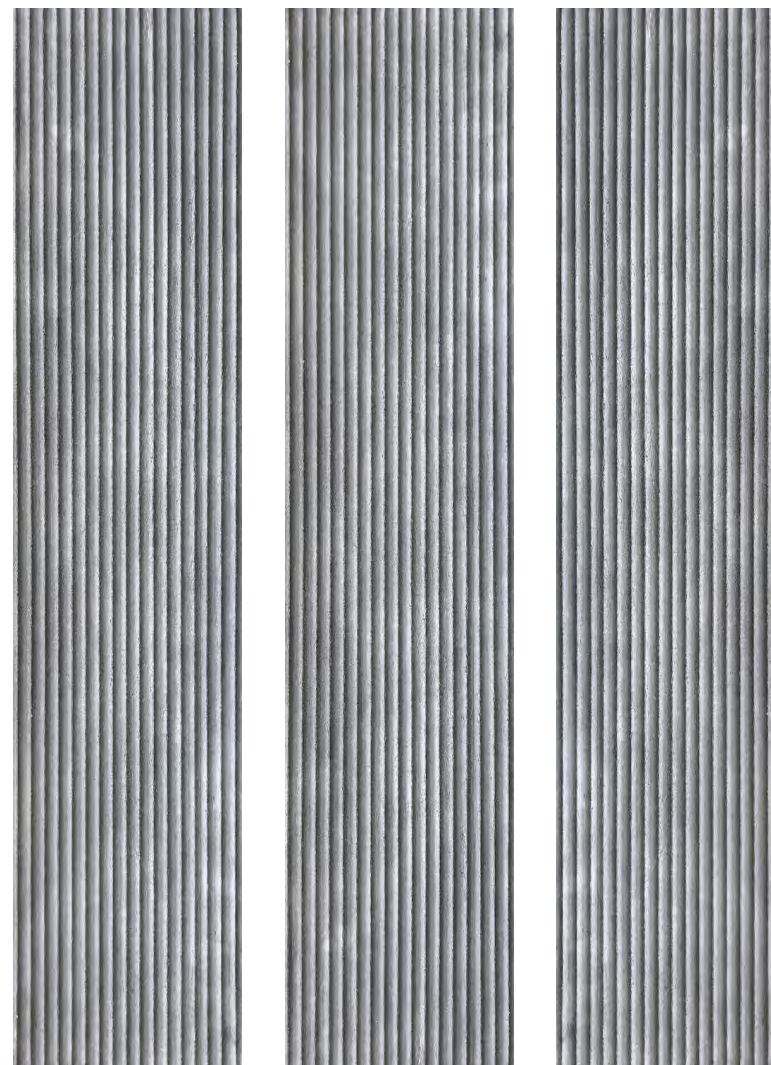
Thickness: 4-8mm

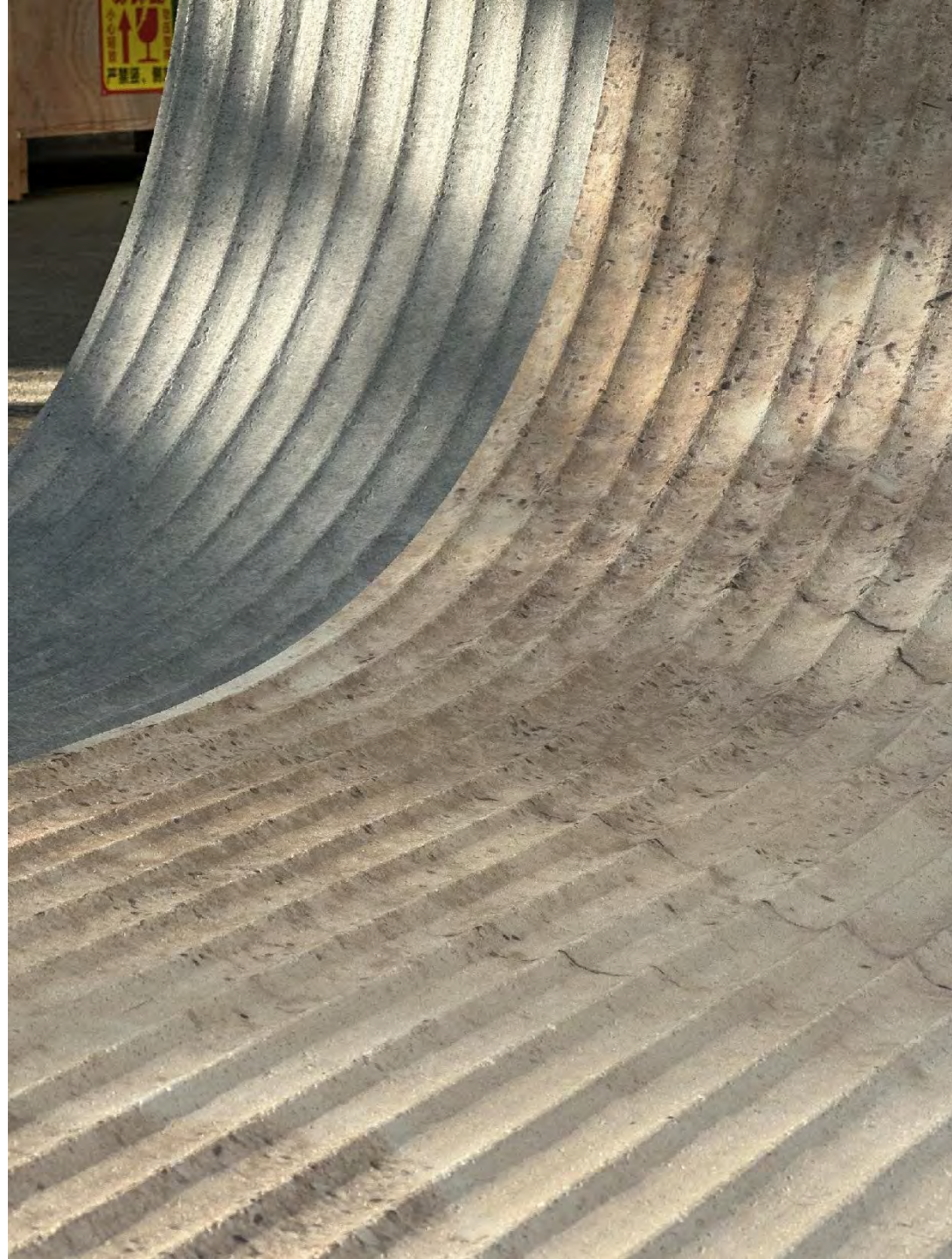
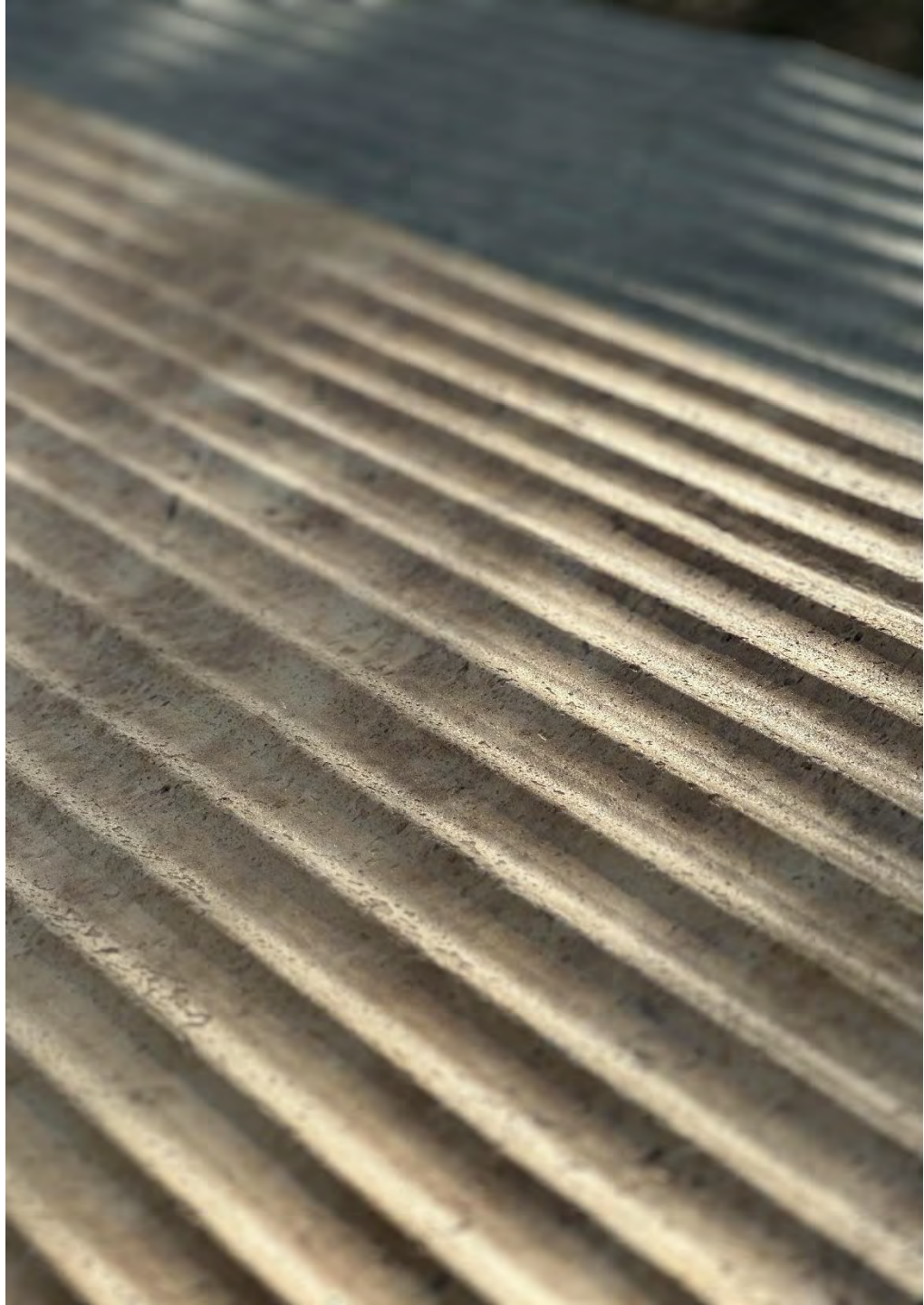


Ando Marble Pillar/Cement
Grey

Size: 600*2780mm

Thickness: 4-8mm



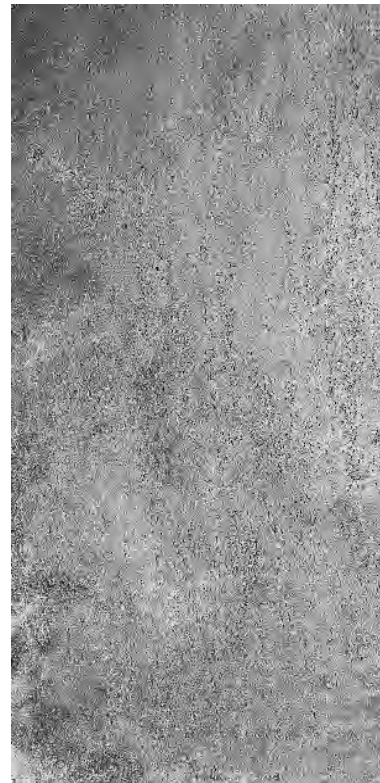
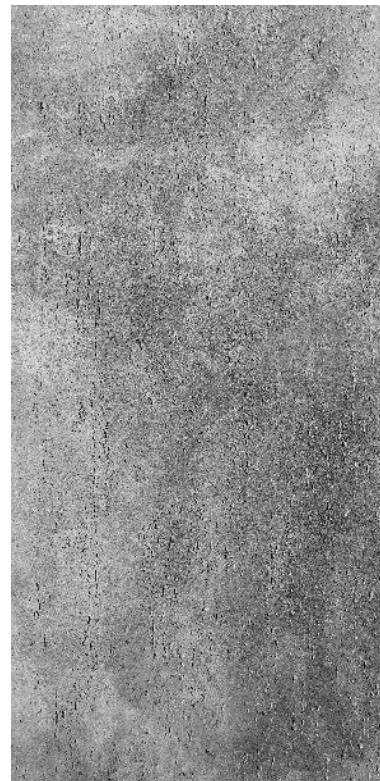
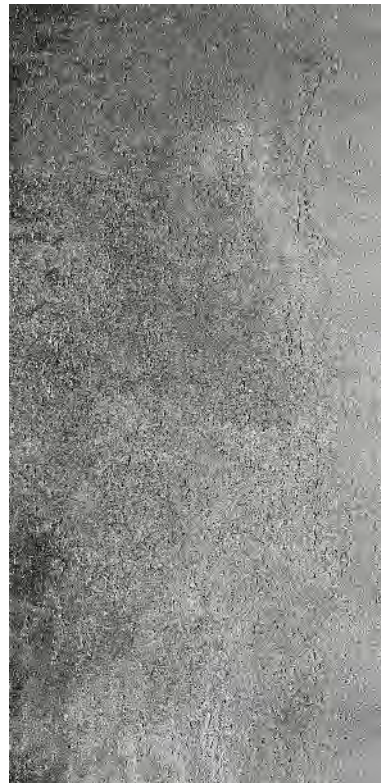
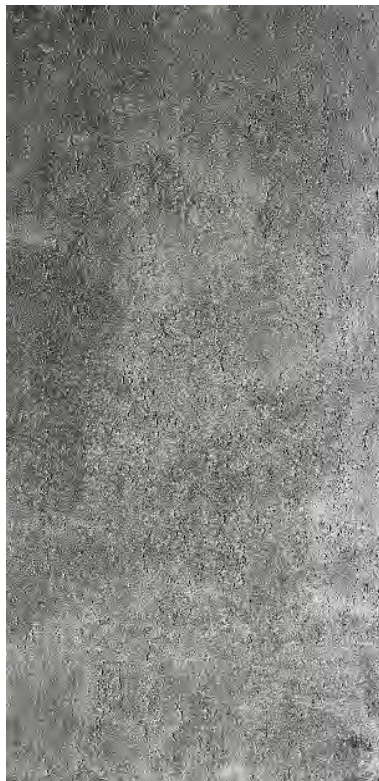




Ando Cement/Light Grey

Size: 600*1200mm

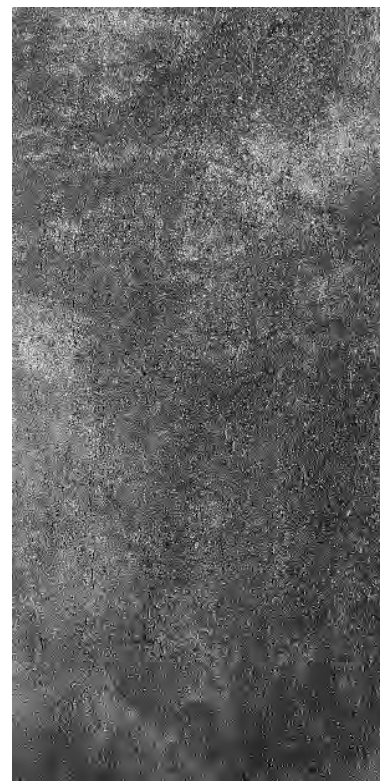
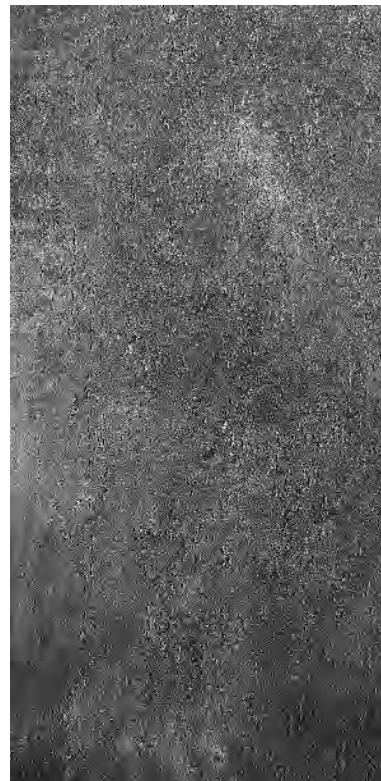
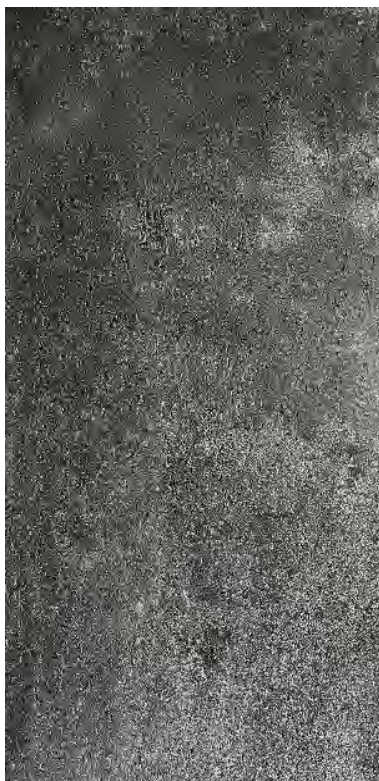
Thickness: 2.5-3.5mm



Ando Cement/Dark Grey

Size: 600*1200mm

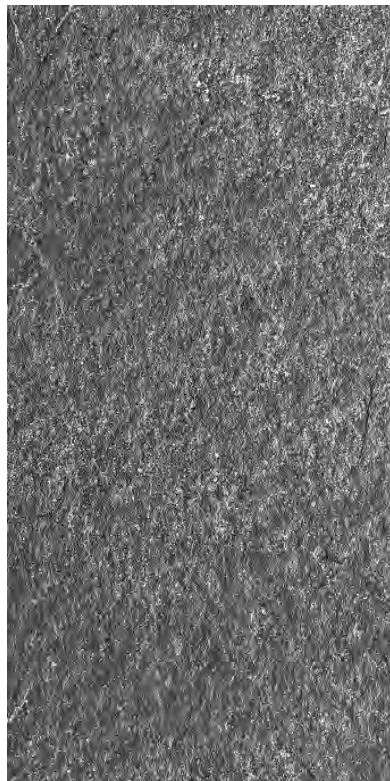
Thickness: 2.5-3.5mm







Lime stone/Dark Grey
Size: 600*1200mm
Thickness: 2.5-6mm



Lime stone/Off-White
Size: 600*1200mm
Thickness: 2.5-6mm

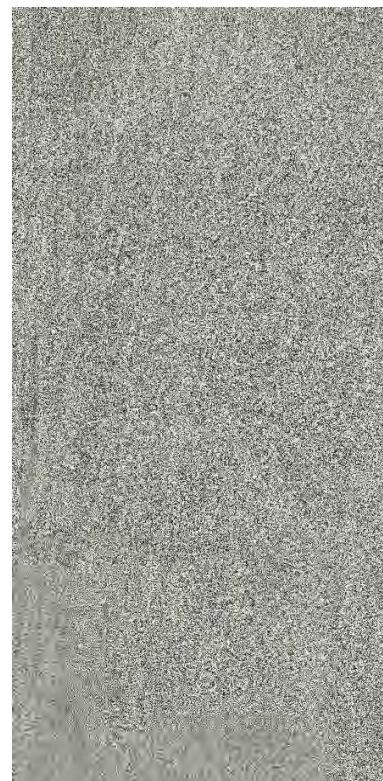




Skyline Stone/Nile Grey

Size: 600*1200mm

Thickness: 2.5-3.5mm



Skyline Stone/Nile Red
Size: 600*1200mm
Thickness: 2.5-3.5mm



Skyline Stone/Nile Yellow

Size: 600*1200mm

Thickness: 2.5-3.5mm





PRODUCT ACCESSORIES AND TOOLS



nano sealant



structural glue and glue gun



small scraper



laser level



color modifier



caulk



cutting machine or angle grinder

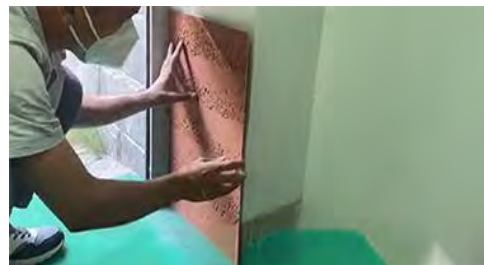


brush

CONSTRUCTION PROCESS DIAGRAM



1. Product Cutting



2. Glue the back of the product onto the wall



3. Fit it with air nails



4. Measure the construction size with a ruler



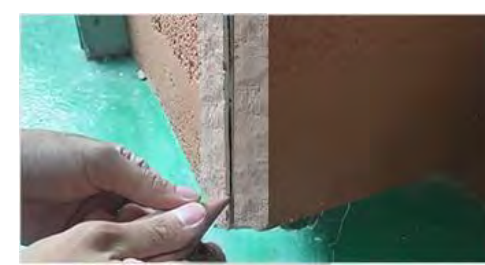
5. Clean it with a dry cloth after paving



6. Take out the product accessories and caulk



7. Fill the internal corners with caulk



8. Fill the external corners with caulk



9. Use a scraper to smooth the caulk



10. Grind the edges and corners

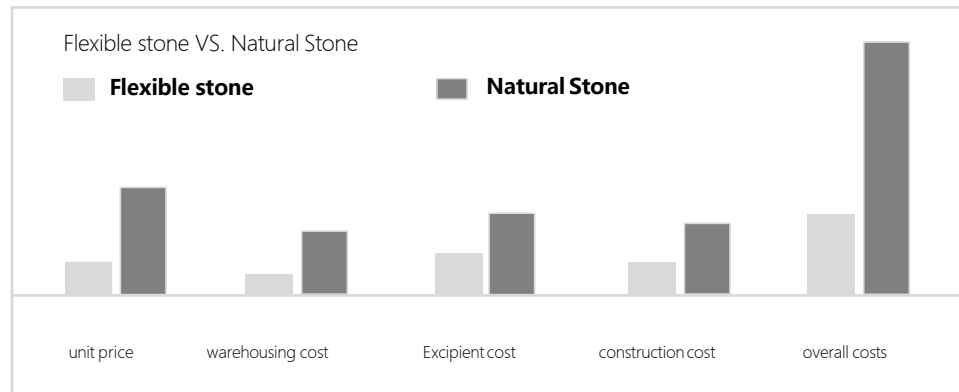


11. Use a color modifier to repair the surface color

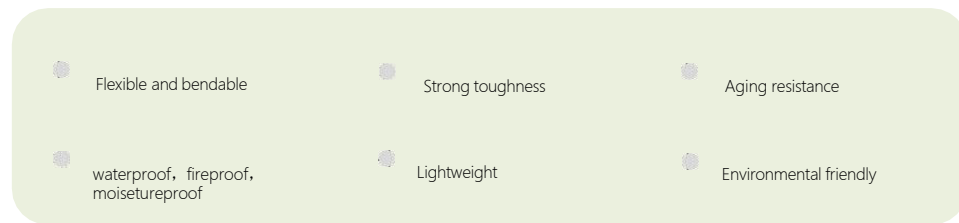


12. After it is completely dry, pull out the air nails

Cost comparison between MS Regenerated Stone and Natural Stone



PRODUCT FEATURES AND ADVANTAGES



- ★ No need to knock off the old base layer, it can be pasted directly, no solid waste discharge, no disturbing people
- ★ High output, low cost, fast construction period, easy construction and good effect
- ★ Tailor-made products in line with local customs or styles

PRODUCT FEATURES AND ADVANTAGES

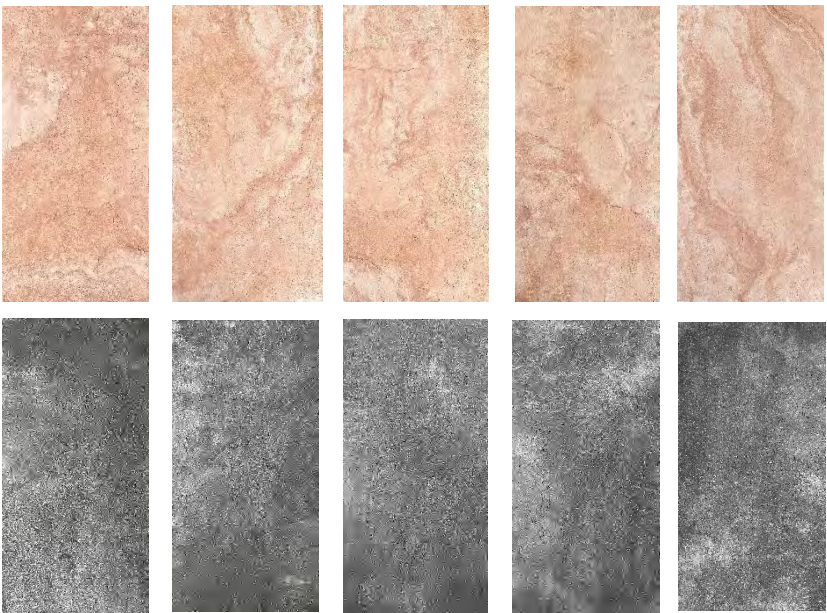
	stone	Exterior wall tiles	Coating	Aluminum composite panel	Flexible stone
Environme ntally friendly	Not environmentally friendly	Not environmentally friendly	Not environmentally friendly	Not environmentally friendly	Environmental friendly
Transport	Heavier High cost	Heavier High cost	High cost	High cost	Low transportation costs, light weight, energy saving
Safety	Unsafe	Unsafe, Risk of falling off	Safety	Unsafe	Safety, lightweight, thin, no risk of falling off for high- rise building
Durability	Durable	Durable	easy to fade	Generally	Durable, Freeze-thaw resistance, aging resistance
Fire resistance	Fireproof	Fireproof	/	No fireproof	Class A fire protection
Convenience	Construction is inconvenient	Construction is inconvenient	Easy to construct	Construction is inconvenient	Easy to construct
Expressiveness	limited expressiveness	limited expressiveness	lack of expressiveness	lack of expressiveness	Rich performance, imitation of stone, wood, leather, metal
light pollution	Smaller	Yes	None	High	Natural texture, no light pollution

Supplementary explanation

1. Product Quality

① About difference texture of products

Natural is the best. The magic stone soft stone try to restore the natural state of the product itself, so we strive to make every piece of product have non-duplicate texture, different pieces, and very close to nature. This is the unique advantages difference between soft stone and ceramic tiles, coatings. Meanwhile it' s providing customers with unparalleled real experience.



② 关于品厚薄差异问题
About thickness difference of products

The MS soft stone which itself seeks to be close to the nature and restore the natural existence itself. Due to the existence of concave and convex texture, the products with texture will lead to inconsistent thickness of the edges, but this is a feature that is close to the sense of nature, making it more authentic. Flat products have evenly surfaces, but errors may occur in the production process, but these errors are within the national standards.



③ About the problem of rough selvage

If there is a little rough selvage in the products, it is a normal phenomenon, which will appear in the split brick series products. The stone materials are all cutting type, with few rough selvage.

Supplementary explanation

1. Product Quality

④ About the shade difference of products

The main raw materials for the production of magic stone soft stone are modified inorganic clay and natural stone powder. During the production process, due to the change of temperature, rich but not messy natural colors are created. It is particularly important to remind that the origin and cause of formation of each batch of raw materials might be different, and the color of replenishment may be little different from that of the original order. Therefore, it is better to make an order plan for each batch of order, order the required products at one time, and avoid replenishment. When the customer's color plate is confirmed, our factory will strictly control the production processing. The color difference between different batches is also unavoidable in various decorative materials such as tiles.

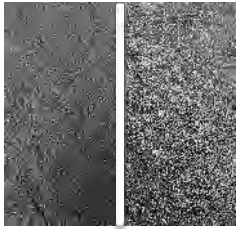
In addition, the color display of the same product will be different during different scene of light, different backgrounds and different electronic screen. It is better to confirm the color of the sample before ordering.



Real photos of the same product with different lights under the same background

⑤ About whether the product needs sealant

The surface of MS soft stone is matte effect. If the product surface is bright according to the effect needs, customers can choose a layer of sealant finish. The coating series products will have a slight coating effect before leaving the factory. If the glossiness is required to be stronger, the sealant can be applied or self treated according to the requirements before leaving the factory.



The original products from factory is mat finish, and sealant covered can be shiny finish.

2. Changing Color

Color cards or real samples can be provided to the factory for color mixing or high-quality national standard exterior wall water-based paint can be purchased for spraying. Try it on a small area first, and then spray it on a large area after the actual effect meets the requirements. After color change, it is recommended to add a protective coating, such as fluorocarbon paint in harsh outdoor environment.

Supplementary explanation

3. Instructions of the accessories

① Nano color modifier and raw repair material

- (1)Keep the seam paper after caulking, and clean the dust and adhesive at the joint first
- (2)Fill the gaps and corners at the joints with patching materials of similar color, and then smooth the surface
- (3)After the repair material is dry, brush the repair material on the color modifier once, and then tear off the seam paper

Note: Before using the color modifier, try it on a small area and make sure whether it have the effect of color supplement, and then use the toner on a large area if there is no problem

Color modifier



raw repair material



②

Aqueous sealant

- (1)Cleaning the dust and pollutants on the surface of the substrate
- (2) Dilute with 10% water and mix well before use
- (3)Roll coating or spraying shall be adopted to evenly brush the finishing agent on the substrate

Note: It is avoid constructing below 5 °C or humid environment, which will affect the film forming effect; Do not touch or touch with water when it is not completely dry, to avoid leaving marks or whitening the coating.



Aqueous sealant

Supplementary explanation

3. Instructions of the accessories

③

Choice of adhesives

- (1)Special ceramic tile glue independently prepared by magic stone can be selected, which is applicable to all products of MS

- (2)Select the brands that achieve the national standard or international C2 standard, such as the write marble tile glue of DEGAO and MAPEI

- (3)It is not recommended to use acidic glass glue. Improper use of glue will lead to glue penetration. It's better to use professional ceramic tile glue in exterior

- (4)The normal curing time is 20-30 days. Please do not tear or move the product to prevent it from falling off



MAGIC STONE Specialized ceramic tile glue 20kg/bag



Smart Stone

**Address: No.2, Chanxiu Road, Nanzhuang Town, Chancheng District,
Foshan City, Guangdong Province, China**